

RUN ANNOUNCEMENT

Holcomb Valley 3N16 Snow/Mud Fun Run

Run Date:	January 23 ^h 2021 AND February 27 th 2021			
Trail Leader:	Rob Rien			
RSVP Required:	Yes	Dirt Devils Facebook Event (preferred) or Email	Rrien07@gmail.com	949-351-9309
Vehicle Limit	No limit	No limit on this run, all are welcome.		
Radio:	CB Channel 4		HAM: 146.580 (DD1) (Simplex) Monitoring the Keller Repeater.	
Permits Required:	Yes	It's always a good idea to have an Adventure Pass, you can pick one up at Turners Outdoors right next door to Zito's Pizza.		
Members:	Bring your Club Membership Card to expedite Club Liability Waiver requirements.			
Guest :	Please Sign BOTH SIDES of the Participant Agreement and bring with you. The leader will send you a copy when you RSVP.			
Reminder /Weather	BEWARE of RATTLESNAKES, Bring lunch and extra water, chairs, basic tools, Flashlight, shovel, camera, extra weather appropriate clothing, etc. The weather changes quickly please be prepared. It is Winter, dress appropriately, bring an extra blanket.			
Cautions:	Weather, cold temperatures, prepare for snow, bring Chains with you, if you need to pick up oversized tire chains go to www.tirechains.com			
Trail Rating:	1 to 5 of the scale of Difficulty depending on the amount of snow and road condition.			
Meeting Location:	Take 38 to Green Lake Road in Running Springs, we will be at the dirt road on the left side of Green Valley Lake road, if you hit the Lake turn around turn at the dirt road and find a place to park. We will be there waiting.			
Meeting Time:	<u>7:30am Meet-up time - Driver meeting at 8:20am - departure at 8:30am</u> Non Members please be prepared to fill out the (LINK) DD Participant Agreement. All Need to Sign the Run Roster, so arrive earlier for this.			
Trailhead Coordinates:	34°14'00.6"N 117°05'21.8"W			
Special Equipment	High ground clearance with limited slip or lockers, 33 inch or larger tires are always a plus. Tire and Body damage is always a possibility. A good spare is required. Some sort of portable Air supply for re-airing up your tires after you air down.			
Trail Description	<p>3N16 is a county road and is rated by the US Department of Forestry as an (Easy Trail) it is a very popular trail in the Big Bear Mountain Area. However, once it snows it transforms into an amazing beautiful snowcapped winter wonderland that can only be experienced by the few who are willing to brave the cold and make the trek out to see it. We have been running the winter trails for a very long time, many guests that we have taken on the runs have come back to run it again, so that means it is safe and a lot of fun.</p> <p>We have traversed the trail till we hit so much snow we could not go any further, other times we have found untraversed fresh power 3 feet deep. While other times there was hardly any snow, but lots of ice and Mud to play in, we never really know what we will find until we arrive at the trailhead. Because this run is meant to be a "SNOW" run, we have chosen to move it around in our run calendar so that we will</p>			

RUN ANNOUNCEMENT

Holcomb Valley 3N16 Snow/Mud Fun Run

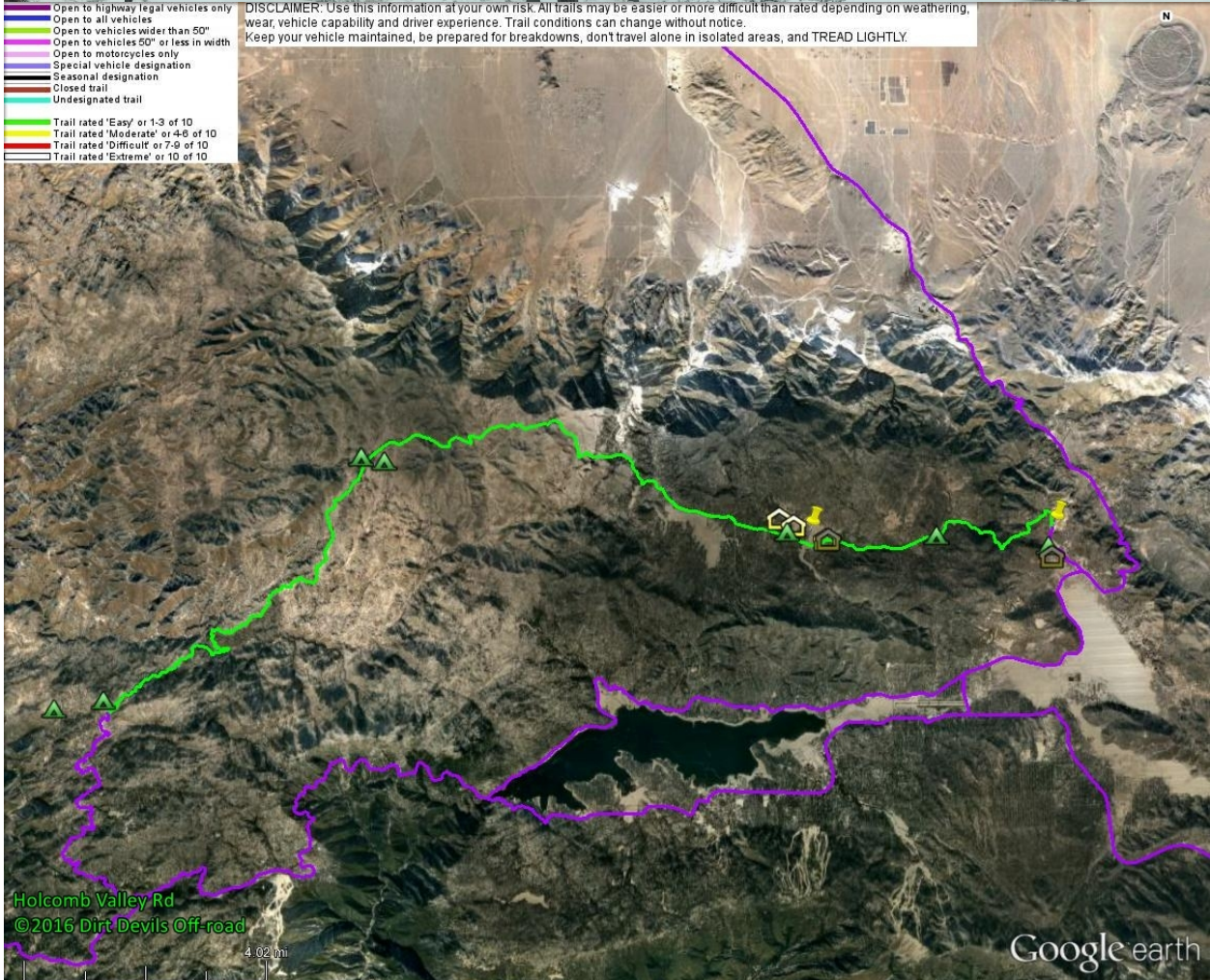
run after a major snow event, so keep coming back and checking in to see where this run lands and how often it is run.

If you like Snow, lets pray for more of it, if you like Mud, pray for more rain, if it all works out we will have some fresh powder, and everyone will have fun, we will all go home with great memories and very dirty Jeeps.



- Open to highway legal vehicles only
- Open to all vehicles
- Open to vehicles wider than 50"
- Open to vehicles 50" or less in width
- Open to motorcycles only
- Special vehicle designation
- Seasonal designation
- Closed trail
- Undesignated trail
- Trail rated 'Easy' or 1-3 of 10
- Trail rated 'Moderate' or 4-6 of 10
- Trail rated 'Difficult' or 7-9 of 10
- Trail rated 'Extreme' or 10 of 10

DISCLAIMER: Use this information at your own risk. All trails may be easier or more difficult than rated depending on weathering, wear, vehicle capability and driver experience. Trail conditions can change without notice. Keep your vehicle maintained, be prepared for breakdowns, don't travel alone in isolated areas, and TREAD LIGHTLY.



Holcomb Valley Rd
©2016 Dirt Devils Off-road

Google earth